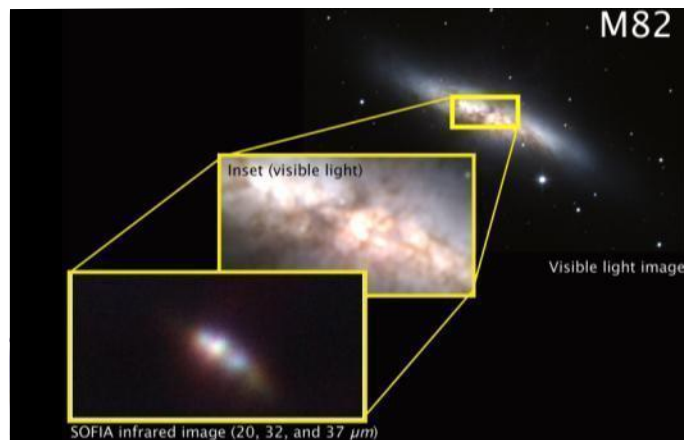
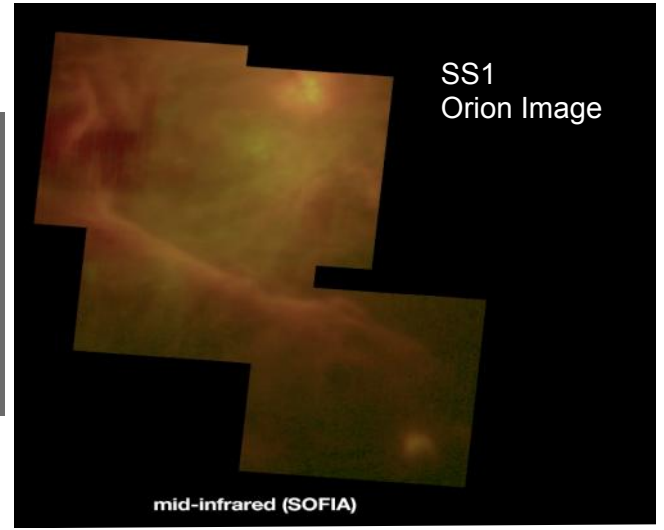


# SOFIA Status & Early Science Observations

IPAC/Caltech/JPL  
Oct 2-5, 2011



## Status of SOFIA

- SOFIA is now operational
- Can be used for some extragalactic research using FORCAST, GREAT and FLITECAM(?)
- Call for Observing Proposals mid Nov. due date of 27 Jan 12 for next year July 2012 through Jun 2013. About 40 flights.
- See Poster number 50 for details